

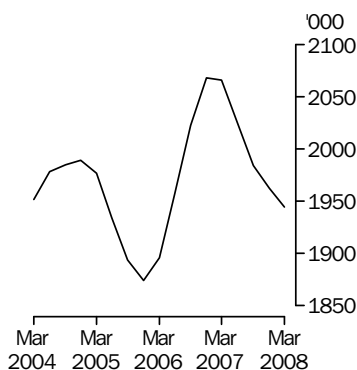
LIVESTOCK PRODUCTS

AUSTRALIA

EMBARGO: 11.30AM (CANBERRA TIME) WED 14 MAY 2008

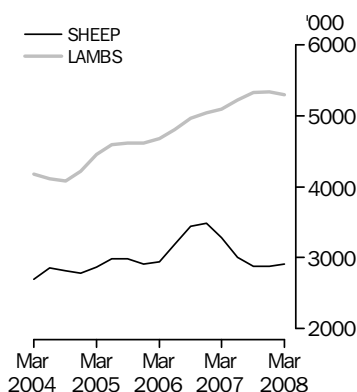
Cattle slaughtering

Excluding calves
Trend



Sheep and lamb slaughtering

Trend



KEY FIGURES

TREND ESTIMATES	Mar Qtr 2007 '000	Dec Qtr 2007 '000	Mar Qtr 2008 '000
Number slaughtered			
Cattle	2 065.8	1 962.5	1 944.1
Calves	247.5	207.2	193.0
Sheep	3 279.3	2 876.6	2 912.3
Lambs	5 097.2	5 342.9	5 299.2
Pigs	1 336.8	1 325.0	1 317.8
Chickens	113 794.8	114 809.7	114 336.4

	Mar Qtr 2007 tonnes	Dec Qtr 2007 tonnes	Mar Qtr 2008 tonnes
Meat produced			
Beef	552 650	523 787	520 064
Veal	7 921	6 819	6 275
Mutton	66 709	62 724	65 469
Lamb	103 935	112 284	111 896
Pig meat	95 775	96 369	96 245
Chicken meat	203 410	201 452	200 127
Wool receivals	112 403	102 769	101 294

	Dec Qtr 2006 ML	Sep Qtr 2007 ML	Dec Qtr 2007 ML
Whole milk intake by factories	2 411	2 304	2 288

KEY POINTS

CATTLE SLAUGHTERED

- The trend estimate for cattle fell by 1% in the March quarter 2008 to 1.9 million while the seasonally adjusted estimate fell by 5.5% to 1.9 million.

SHEEP SLAUGHTERED

- The trend estimate for sheep slaughtered rose by 1.2% in the March quarter 2008 to 2.9 million while the seasonally adjusted estimate remained steady at 2.9 million.

LAMBS SLAUGHTERED

- The trend estimate for lambs slaughtered fell by 1% in the March quarter 2008 to 5.3 million while the seasonally adjusted estimate fell by 7% to 5.1 million.

PIGS SLAUGHTERED

- The trend estimate for pigs slaughtered remained steady in the March quarter 2008 at 1.3 million while the seasonally adjusted estimate also remained steady at 1.3 million.

INQUIRIES

For further information about these and related statistics, contact the National Information and Referral Service on 1300 135 070 or Ian Hilly on Hobart (03) 6222 5855.

NOTES

FORTHCOMING ISSUES

ISSUE (Quarter)

RELEASE DATE

June 2008

14 August 2008

September 2008

14 November 2008

.....

CHANGES IN THIS ISSUE

There are no changes in this issue.

.....

ABBREVIATIONS

ABS Australian Bureau of Statistics

ML megalitre

t tonne

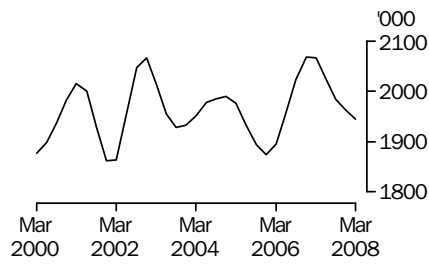
UHT ultra heat treated

Brian Pink

Australian Statistician

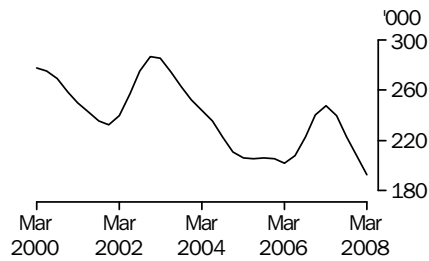
LIVESTOCK SLAUGHTERED TREND

CATTLE (EXCLUDING CALVES)



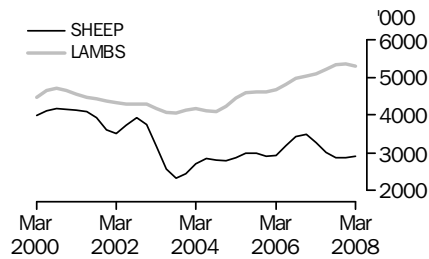
Trend estimate for the number of cattle slaughtered fell by 1% in the March quarter 2008 to 1.9 million.

CALVES



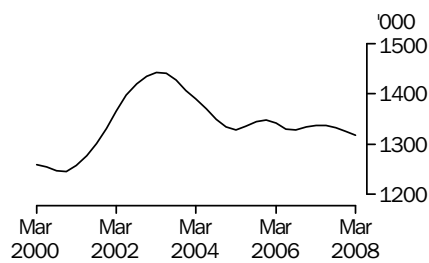
The trend estimate for the number of calves slaughtered in March quarter 2008 fell by 7% to 193,000.

SHEEP AND LAMBS



In March quarter 2008, the trend estimate for the number of sheep slaughtered rose by 1% to 2.9 million. Trend estimate for lamb slaughtered remained steady for March quarter 2008 at 5.3 million.

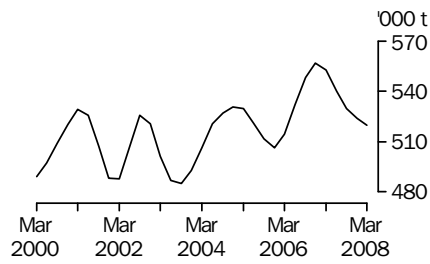
PIGS



The trend estimate for the number of pigs slaughtered in the March quarter 2008 remained steady at 1.3 million.

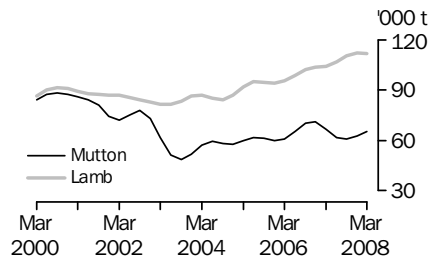
MEAT PRODUCTION TREND

BEEF



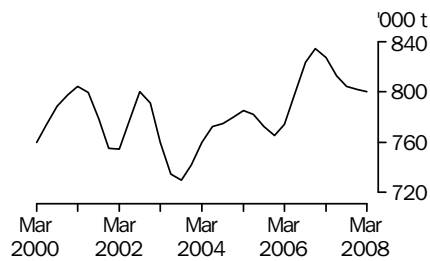
In March quarter 2008, the trend estimate for beef production fell 1% to 520,000 tonnes.

MUTTON AND LAMB



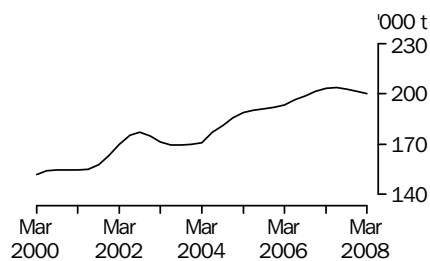
In March quarter 2008 the trend estimate for mutton production rose by 4% to 65,500 tonnes. The trend estimate lamb production this quarter remained steady at 112,000 tonnes.

TOTAL RED MEAT



The trend estimate for red meat production fell marginally to 800,000 tonnes in March quarter 2008.

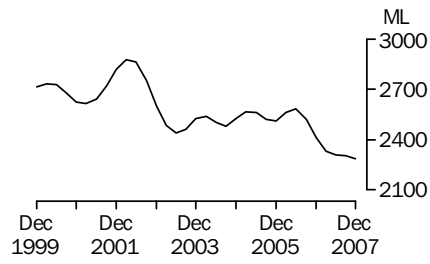
CHICKEN MEAT



The trend estimate for chicken meat production in the March quarter 2008 fell 1% to 200,000 tonnes.

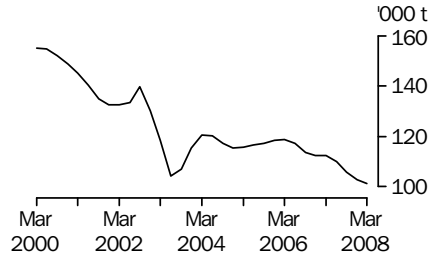
LIVESTOCK PRODUCTS TREND

WHOLE MILK INTAKE BY FACTORIES



The trend estimate for whole milk intake by factories in December quarter 2007 remained steady at 2.3 billion litres.

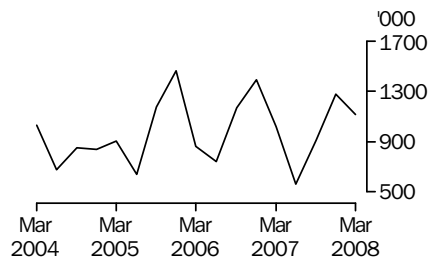
BROKERS AND DEALERS RECEIVALS OF TAXABLE WOOL



The trend estimate for wool receivals by brokers and dealers in March quarter 2008 fell by 1% to 101,000 tonnes.

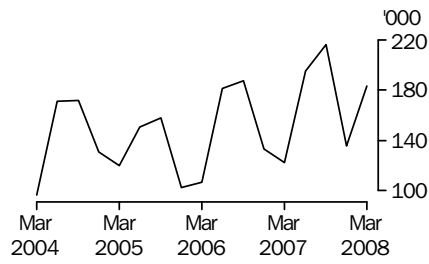
LIVESTOCK EXPORTS ORIGINAL

EXPORTS OF LIVE SHEEP



Live sheep exports fell by 13% to 1.1 million in March quarter 2008. Gross value fell by 26% for the quarter, down to \$67.3 million. Unit value fell by 15% to \$60.31.

EXPORTS OF LIVE CATTLE



Live cattle exports rose by 35% to 183,000 in March quarter 2008. Gross value rose by 28% for the quarter, up to \$114 million. Unit value fell by 5% to \$622.79.

LIST OF TABLES AND GRAPHS

page

OVERVIEW

1	Livestock slaughtered, Australia	9
2	Livestock products, Australia	10

LIVESTOCK SLAUGHTERINGS

3	Number of livestock slaughtered, bulls, bullocks and steers, by state	11
4	Number of livestock slaughtered, cows and heifers, by state	12
5	Number of livestock slaughtered, total cattle (excluding calves), by state	13
6	Number of livestock slaughtered, calves, by state	14
7	Number of livestock slaughtered, sheep, by state	15
8	Number of livestock slaughtered, lambs, by state	16
9	Number of livestock slaughtered, pigs, by state	17
10	Number of chickens slaughtered, by state	18
11	Number of livestock slaughtered, financial year, by state	19

MEAT PRODUCED

12	Red meat produced, beef, by state	20
13	Red meat produced, veal, by state	21
14	Red meat produced, mutton, by state	22
15	Red meat produced, lamb, by state	23
16	Red meat produced, pig meat, by state	24
17	Total red meat produced, by state	25
18	Chicken meat produced, by state	26
19	Meat produced, financial year, by state	27

EXPORTS OF MEAT AND LIVE ANIMALS

20	Exports of fresh, frozen and processed meat, Australia	28
21	Exports of live sheep and cattle, Australia	29

LIVESTOCK PRODUCTS

22	Whole milk intake by factories, by state	30
23	Market milk sales by factories, by state	31
24	Brokers and dealers receivals of taxable wool, by state	32
25	Livestock products, financial year, by state	33

LIVESTOCK SLAUGHTERED, Australia(a): All Series

<i>Quarter</i>	<i>Bulls, bullocks and steers</i> '000	<i>Cows and heifers</i> '000	<i>Cattle (excluding calves)</i> '000	<i>Calves</i> '000	<i>Sheep</i> '000	<i>Lambs</i> '000	<i>Pigs</i> '000	<i>Chickens</i> '000
ORIGINAL								
2006								
December	1 162.6	928.4	2 091.1	182.0	4 100.7	5 180.6	1 314.2	115 061.6
2007								
March	1 072.6	960.5	2 033.1	129.7	3 883.8	5 270.3	1 319.8	114 226.4
June	1 010.2	1 031.2	2 041.5	220.4	2 549.8	5 020.7	1 358.7	112 339.6
September	1 038.8	945.7	1 984.5	405.2	2 282.1	5 182.5	1 348.3	113 435.5
December	1 084.5	906.5	1 991.0	154.6	3 325.6	5 680.9	1 322.8	119 574.6
2008								
March	929.2	874.2	1 803.5	96.4	3 408.9	5 013.3	1 263.3	112 972.3
SEASONALLY ADJUSTED								
2006								
December	1 135.1	978.1	2 113.2	249.4	3 631.0	4 980.6	1 327.4	112 042.4
2007								
March	1 116.6	984.2	2 100.9	252.7	3 308.9	5 264.6	1 360.8	114 293.4
June	1 028.8	941.9	1 970.7	234.0	2 850.9	4 944.1	1 313.7	114 589.8
September	1 006.0	967.6	1 973.6	224.1	2 866.4	5 478.6	1 341.4	114 266.0
December	1 058.6	953.1	2 011.7	209.6	2 928.2	5 471.4	1 334.1	116 390.2
2008								
March	988.7	913.5	1 902.3	188.1	2 891.5	5 093.5	1 303.6	113 063.1
TREND								
2006								
December	1 122.0	946.0	2 068.0	240.3	3 484.2	5 039.2	1 334.1	113 021.6
2007								
March	1 095.7	970.1	2 065.8	247.5	3 279.3	5 097.2	1 336.8	113 794.8
June	1 053.6	970.8	2 024.3	240.0	3 005.2	5 217.4	1 337.8	114 541.0
September	1 028.0	955.8	1 983.8	223.1	2 877.6	5 321.1	1 332.5	114 994.6
December	1 018.6	943.9	1 962.5	207.2	2 876.6	5 342.9	1 325.0	114 809.7
2008								
March	1 014.0	930.2	1 944.1	193.0	2 912.3	5 299.2	1 317.8	114 336.4

(a) For more information refer to paragraphs 5, and 7 to 9 of the Explanatory Notes.

LIVESTOCK PRODUCTS, Australia(a): All Series

Quarter	RED MEAT						Chicken meat tonnes	Whole milk intake by factories ML	Brokers and dealers receivals of taxable wool tonnes
	Beef tonnes	Veal tonnes	Mutton tonnes	Lamb tonnes	Pig meat tonnes	Total red meat tonnes			
ORIGINAL									
2006									
December	560 541	6 738	85 508	104 276	92 769	849 833	206 225	3 197	128 444
2007									
March	548 468	5 846	77 931	109 039	92 959	834 242	204 254	2 144	110 561
June	537 517	7 441	50 079	103 208	99 754	797 998	202 754	1 734	92 089
September	530 877	10 757	49 637	106 211	98 271	795 753	199 865	2 304	108 620
December	533 589	5 853	75 098	120 576	95 079	830 195	207 705	2 993	119 173
2008									
March	486 457	4 250	73 912	105 745	90 999	761 362	196 474	nya	98 116
SEASONALLY ADJUSTED									
2006									
December	561 145	8 066	73 524	102 041	94 979	839 755	202 837	2 394	111 510
2007									
March	562 460	7 987	68 513	108 471	97 247	844 678	206 037	2 283	113 578
June	528 169	7 521	57 157	99 802	94 934	787 583	203 027	2 328	113 150
September	527 244	7 471	60 352	112 853	96 733	804 653	201 182	2 342	101 751
December	533 528	6 961	64 617	118 151	97 208	820 465	204 353	2 248	104 045
2008									
March	511 909	5 976	64 705	105 392	95 260	783 242	197 975	nya	101 572
TREND									
2006									
December	556 826	7 844	70 974	103 465	95 514	834 623	201 327	2 411	112 501
2007									
March	552 650	7 921	66 709	103 935	95 775	826 990	203 410	2 332	112 403
June	540 205	7 746	61 641	106 902	96 264	812 758	203 720	2 311	110 058
September	529 700	7 327	60 656	110 520	96 413	804 616	202 887	2 304	105 991
December	523 787	6 819	62 724	112 284	96 369	801 983	201 452	2 288	102 769
2008									
March	520 064	6 275	65 469	111 896	96 245	799 949	200 127	nya	101 294

nya not yet available

(a) For more information refer to paragraphs 5 to 9 and 13 to 15 of the Explanatory Notes.

NUMBER OF LIVESTOCK SLAUGHTERED (a), Bulls, bullocks and steers: All Series

Quarter	New South Wales	Victoria	Queensland	South Australia	Western Australia	Tasmania	Australia
	'000	'000	'000	'000	'000	'000	'000
ORIGINAL							
2006							
December	230.4	183.9	618.3	50.0	53.8	26.0	1 162.6
2007							
March	254.3	176.9	522.6	51.1	44.9	22.6	1 072.6
June	225.8	134.7	543.3	41.1	43.2	21.9	1 010.2
September	222.3	124.9	587.1	38.4	48.4	17.4	1 038.8
December	236.5	163.8	558.9	42.6	62.3	20.2	1 084.5
2008							
March	228.8	150.2	432.4	48.6	48.1	21.0	929.2
SEASONALLY ADJUSTED							
2006							
December	234.9	166.6	607.3	45.3	45.5	25.2	1 135.1
2007							
March	244.1	162.0	612.0	44.3	46.2	20.3	1 116.6
June	226.3	143.6	543.0	44.2	47.5	21.7	1 028.8
September	227.0	145.0	521.4	46.9	51.3	20.6	1 006.0
December	241.3	147.1	548.7	39.0	52.9	19.6	1 058.6
2008							
March	228.8	137.7	505.1	41.7	49.7	18.9	988.7
TREND							
2006							
December	238.0	163.6	604.7	44.6	47.0	22.7	1 122.0
2007							
March	235.4	158.8	590.0	45.3	46.3	22.4	1 095.7
June	232.4	150.3	560.2	44.8	48.2	21.2	1 053.6
September	231.5	145.2	536.8	43.8	50.5	20.4	1 028.0
December	232.5	142.9	524.8	42.1	51.5	19.8	1 018.6
2008							
March	234.3	141.4	519.7	40.8	51.4	19.0	1 014.0

(a) For more information refer to paragraphs 4, 5 and 7 of the Explanatory Notes.

NUMBER OF LIVESTOCK SLAUGHTERED(a), Cows and heifers: All Series

Quarter	New South Wales	Victoria	Queensland	South Australia	Western Australia	Tasmania	Australia
	'000	'000	'000	'000	'000	'000	'000
ORIGINAL							
2006							
December	213.9	247.0	330.1	46.1	61.3	29.0	928.4
2007							
March	203.4	255.9	347.3	47.1	71.5	34.2	960.5
June	224.4	236.8	424.1	38.4	67.8	38.7	1 031.2
September	204.7	221.7	389.3	29.8	67.0	32.2	945.7
December	211.2	223.6	328.7	46.2	64.2	31.6	906.5
2008							
March	205.6	232.4	285.6	37.0	78.4	34.4	874.2
SEASONALLY ADJUSTED							
2006							
December	215.7	245.2	375.8	43.9	64.4	32.2	978.1
2007							
March	208.7	248.8	392.2	41.9	67.1	31.4	984.2
June	208.2	230.8	358.7	38.6	67.4	34.6	941.9
September	214.1	237.3	371.6	36.2	68.5	36.1	967.6
December	213.8	221.4	371.4	43.7	67.8	35.0	953.1
2008							
March	218.5	225.2	321.6	32.7	73.3	34.5	913.5
TREND							
2006							
December	201.9	234.0	372.2	41.3	64.0	31.5	946.0
2007							
March	209.7	243.6	377.6	41.1	66.5	32.6	970.1
June	212.2	240.1	376.6	39.9	67.6	34.2	970.8
September	212.0	231.3	367.9	38.9	68.2	35.2	955.8
December	215.1	226.4	355.5	38.1	69.6	35.3	943.9
2008							
March	217.7	223.9	340.9	36.9	71.2	34.8	930.2

(a) For more information refer to paragraphs 4, 5 and 7 of the Explanatory Notes.

NUMBER OF LIVESTOCK SLAUGHTERED(a), Total cattle (excluding calves): All Series

Quarter	New South Wales	Victoria	Queensland	South Australia	Western Australia	Tasmania	Australia
	'000	'000	'000	'000	'000	'000	'000
ORIGINAL							
2006							
December	444.2	430.9	948.4	96.1	115.1	55.0	2 091.1
2007							
March	457.7	432.8	869.9	98.2	116.4	56.8	2 033.1
June	450.2	371.5	967.4	79.5	111.0	60.6	2 041.5
September	427.0	346.6	976.5	68.2	115.4	49.6	1 984.5
December	447.8	387.4	887.6	88.8	126.5	51.8	1 991.0
2008							
March	434.3	382.5	718.0	85.6	126.4	55.4	1 803.5
SEASONALLY ADJUSTED							
2006							
December	450.6	411.7	983.1	89.2	110.0	57.4	2 113.2
2007							
March	452.8	410.8	1 004.3	86.2	113.3	51.7	2 100.9
June	434.5	374.4	901.7	82.8	115.0	56.3	1 970.7
September	441.1	382.3	893.0	83.1	119.8	56.6	1 973.6
December	455.0	368.5	920.0	82.7	120.7	54.5	2 011.7
2008							
March	447.3	363.0	826.7	74.4	122.9	53.5	1 902.3
TREND							
2006							
December	439.8	397.6	976.8	85.9	111.0	54.2	2 068.0
2007							
March	445.1	402.3	967.6	86.4	112.8	55.0	2 065.8
June	444.7	390.4	936.7	84.7	115.7	55.5	2 024.3
September	443.4	376.5	904.7	82.6	118.7	55.6	1 983.8
December	447.5	369.3	880.4	80.3	121.1	55.1	1 962.5
2008							
March	452.0	365.3	860.5	77.7	122.7	53.8	1 944.1

(a) For more information refer to paragraphs 4, 5 and 7 of the Explanatory Notes.

NUMBER OF LIVESTOCK SLAUGHTERED (a), Calves: All Series

Quarter	New South Wales	Victoria	Queensland	South Australia	Western Australia	Tasmania	Australia
	'000	'000	'000	'000	'000	'000	'000
ORIGINAL							
2006							
December	58.9	102.3	11.7	0.9	0.7	7.2	182.0
2007							
March	62.1	48.0	16.0	1.4	0.8	1.4	129.7
June	56.5	139.8	17.4	1.3	1.1	4.1	220.4
September	51.6	297.9	15.6	1.4	1.1	37.5	405.2
December	46.1	88.5	10.9	0.8	1.0	7.2	154.6
2008							
March	37.5	42.4	12.3	1.1	1.0	2.0	96.4
SEASONALLY ADJUSTED							
2006							
December	62.0	162.2	13.7	1.2	0.8	10.6	249.4
2007							
March	61.8	175.9	16.4	1.4	0.8	13.8	252.7
June	53.6	148.1	15.5	1.2	1.1	13.7	234.0
September	52.2	138.8	14.9	1.2	1.0	12.8	224.1
December	48.4	139.6	12.8	1.1	1.0	10.7	209.6
2008							
March	37.3	150.9	12.6	1.1	1.2	19.3	188.1
TREND							
2006							
December	60.2	156.8	15.2	1.2	0.9	11.3	240.3
2007							
March	59.8	164.1	15.5	1.3	0.9	12.9	247.5
June	56.6	154.7	15.5	1.2	0.9	13.0	240.0
September	51.5	143.4	14.6	1.2	1.0	12.8	223.1
December	46.1	141.4	13.4	1.1	1.0	13.8	207.2
2008							
March	40.7	145.6	12.4	1.1	1.1	15.8	193.0

(a) For more information refer to paragraphs 4, 5 and 7 of the Explanatory Notes.

7

NUMBER OF LIVESTOCK SLAUGHTERED (a), Sheep: All Series

Quarter	New South Wales	Victoria	Queensland	South Australia	Western Australia	Tasmania	Australia
	'000	'000	'000	'000	'000	'000	'000
ORIGINAL							
2006							
December	1 215.5	1 262.7	244.1	440.0	805.3	133.1	4 100.7
2007							
March	1 168.6	1 230.4	273.0	390.8	697.1	123.8	3 883.8
June	701.0	658.4	276.2	296.0	550.5	67.7	2 549.8
September	546.4	694.1	187.3	287.0	524.9	42.4	2 282.1
December	895.6	1 038.7	203.6	328.0	765.9	93.9	3 325.6
2008							
March	807.5	1 028.1	189.4	370.4	892.0	121.6	3 408.9
SEASONALLY ADJUSTED							
2006							
December	1 110.4	1 117.8	245.2	368.8	704.7	120.1	3 631.0
2007							
March	1 047.4	1 077.0	265.3	346.5	590.8	90.3	3 308.9
June	684.5	717.0	257.7	361.4	657.9	72.6	2 850.9
September	718.2	858.1	207.7	333.5	623.4	72.5	2 866.4
December	815.0	919.1	204.9	275.7	671.6	84.6	2 928.2
2008							
March	721.6	898.5	183.4	327.3	755.7	93.7	2 891.5
TREND							
2006							
December	1 070.6	1 068.3	247.9	352.3	666.3	102.2	3 484.2
2007							
March	957.8	985.3	257.1	365.9	645.5	93.8	3 279.3
June	810.3	871.1	247.5	347.8	625.4	79.1	3 005.2
September	739.9	838.1	223.1	325.4	643.7	75.4	2 877.6
December	740.6	874.8	200.1	309.3	684.3	82.6	2 876.6
2008							
March	766.4	931.4	183.1	300.8	724.7	90.9	2 912.3

(a) For more information refer to paragraphs 4, 5 and 7 of the Explanatory Notes.

NUMBER OF LIVESTOCK SLAUGHTERED (a), Lambs: All Series

Quarter	New South Wales	Victoria	Queensland	South Australia	Western Australia	Tasmania	Australia
	'000	'000	'000	'000	'000	'000	'000
ORIGINAL							
2006							
December	1 145.2	2 454.7	75.9	840.5	548.3	115.9	5 180.6
2007							
March	1 086.5	2 399.9	91.3	886.7	695.8	110.1	5 270.3
June	1 106.6	2 156.3	96.3	800.0	719.6	141.9	5 020.7
September	1 236.4	2 237.7	102.8	883.6	592.9	129.1	5 182.5
December	1 235.2	2 484.5	121.2	1 064.6	639.3	136.2	5 680.9
2008							
March	1 082.7	2 203.5	97.3	911.6	606.0	112.2	5 013.3
SEASONALLY ADJUSTED							
2006							
December	1 111.1	2 310.8	77.7	795.4	539.0	123.0	4 980.6
2007							
March	1 077.0	2 403.1	98.9	846.1	712.9	120.0	5 264.6
June	1 091.9	2 180.8	88.4	767.9	668.1	129.3	4 944.1
September	1 301.9	2 352.2	102.5	1 030.1	635.9	123.7	5 478.6
December	1 200.5	2 341.6	123.2	1 009.2	632.6	144.1	5 471.4
2008							
March	1 100.6	2 258.4	104.7	872.6	619.3	123.2	5 093.5
TREND							
2006							
December	1 114.6	2 301.6	79.0	809.3	608.5	122.7	5 039.2
2007							
March	1 100.6	2 321.7	87.6	813.5	644.3	122.7	5 097.2
June	1 150.7	2 307.8	97.6	872.5	669.1	126.0	5 217.4
September	1 203.1	2 302.7	104.8	943.1	653.1	130.6	5 321.1
December	1 201.1	2 307.9	110.8	969.2	628.0	132.4	5 342.9
2008							
March	1 160.7	2 310.9	114.3	956.2	620.9	131.1	5 299.2

(a) For more information refer to paragraphs 4, 5 and 7 of the Explanatory Notes.

NUMBER OF LIVESTOCK SLAUGHTERED (a), Pigs: All Series

Quarter	New South Wales	Victoria	Queensland	South Australia	Western Australia	Tasmania	Australia
	'000	'000	'000	'000	'000	'000	'000
ORIGINAL							
2006							
December	405.4	196.0	303.0	256.7	140.5	10.9	1 314.2
2007							
March	391.5	180.6	318.7	273.4	144.8	9.4	1 319.8
June	407.8	208.4	327.2	255.6	147.6	11.7	1 358.7
September	410.1	182.1	336.6	270.2	139.0	10.3	1 348.3
December	406.6	172.9	311.6	286.0	135.2	10.4	1 322.8
2008							
March	378.3	145.4	306.3	288.6	135.0	9.7	1 263.3
SEASONALLY ADJUSTED							
2006							
December	404.1	196.3	309.7	261.7	146.4	10.2	1 327.4
2007							
March	411.1	188.7	325.0	276.0	145.7	10.1	1 360.8
June	394.3	198.5	319.7	246.7	141.3	11.7	1 313.7
September	406.5	183.1	330.8	272.7	139.0	10.2	1 341.4
December	404.6	173.1	318.5	290.6	140.7	9.8	1 334.1
2008							
March	397.3	152.2	312.3	294.4	135.8	10.5	1 303.6
TREND							
2006							
December	402.5	196.9	314.7	265.8	142.9	10.4	1 334.1
2007							
March	403.9	194.7	319.6	262.3	143.8	10.7	1 336.8
June	403.9	191.9	324.5	262.6	142.9	10.7	1 337.8
September	402.6	184.0	324.4	271.1	140.2	10.5	1 332.5
December	402.1	171.0	320.1	284.3	138.6	10.2	1 325.0
2008							
March	401.5	156.4	315.3	298.3	137.2	10.0	1 317.8

(a) For more information refer to paragraphs 4, 5 and 7 of the Explanatory Notes.

NUMBER OF CHICKENS SLAUGHTERED(a): All Series

Quarter	New South Wales	Victoria	Queensland	South Australia	Western Australia	Australia
	'000	'000	'000	'000	'000	'000
ORIGINAL						
2006						
December	37 672.9	32 323.5	23 123.2	np	np	115 061.6
2007						
March	38 363.6	31 106.6	22 607.2	np	np	114 226.4
June	37 010.4	31 159.4	22 428.6	np	np	112 339.6
September	36 320.3	30 704.8	23 697.8	np	np	113 435.5
December	38 283.6	32 886.6	25 128.2	np	np	119 574.6
2008						
March	36 537.6	29 543.0	24 144.5	np	np	112 972.3
SEASONALLY ADJUSTED						
2006						
December	37 240.6	31 554.3	21 877.6	np	np	112 042.4
2007						
March	38 359.5	31 080.9	22 584.7	np	np	114 293.4
June	37 348.8	31 397.0	23 749.4	np	np	114 589.8
September	36 451.7	31 244.4	23 752.1	np	np	114 266.0
December	37 804.8	32 124.5	23 765.0	np	np	116 390.2
2008						
March	36 539.2	29 506.6	24 141.8	np	np	113 063.1
TREND						
2006						
December	37 634.3	31 641.1	21 909.8	np	np	113 021.6
2007						
March	37 645.5	31 341.1	22 821.0	np	np	113 794.8
June	37 455.2	31 370.2	23 409.5	np	np	114 541.0
September	37 167.7	31 463.3	23 763.4	np	np	114 994.6
December	36 993.1	31 128.4	23 923.8	np	np	114 809.7
2008						
March	36 944.9	30 461.2	24 011.7	np	np	114 336.4

np not available for publication but included in totals where applicable, unless otherwise indicated

(a) For more information refer to paragraphs 8 and 9 of the Explanatory Notes.

NUMBER OF LIVESTOCK SLAUGHTERED (a): Original

Financial year	New South Wales '000	Victoria '000	Queensland '000	South Australia '000	Western Australia '000	Tasmania '000	Australia '000
BULLS, BULLOCKS AND STEERS							
2004-05	925.8	600.2	2 330.6	191.1	228.7	109.2	4 386.9
2005-06	915.3	577.7	2 299.0	176.8	187.4	81.1	4 238.5
2006-07	941.3	634.5	2 357.2	179.4	189.0	88.5	4 390.9
COWS AND HEIFERS							
2004-05	774.6	915.5	1 359.8	168.0	281.8	94.9	3 598.7
2005-06	675.0	803.6	1 347.9	148.0	246.6	116.2	3 341.6
2006-07	808.7	932.7	1 474.1	162.5	259.7	129.1	3 770.8
CATTLE (excluding calves)							
2004-05	1 700.4	1 515.7	3 690.5	359.1	510.5	204.1	7 985.6
2005-06	1 590.3	1 381.3	3 646.9	324.8	434.0	197.3	7 580.1
2006-07	1 750.0	1 567.2	3 831.3	341.9	448.7	217.5	8 161.7
CALVES							
2004-05	201.2	539.0	73.3	5.3	4.3	44.1	867.9
2005-06	204.6	505.2	62.3	4.4	3.7	40.2	821.2
2006-07	232.1	574.7	61.9	4.9	3.7	40.8	918.9
SHEEP							
2004-05	3 548.4	3 465.4	918.9	979.1	2 205.2	325.6	11 442.6
2005-06	3 707.5	3 722.0	940.0	1 061.9	2 120.6	277.7	11 829.7
2006-07	3 888.6	3 978.0	1 000.2	1 414.0	2 613.8	376.5	13 271.2
LAMBS							
2004-05	4 110.4	6 787.1	287.2	3 236.2	2 466.7	442.9	17 330.6
2005-06	4 227.3	7 613.5	283.6	3 231.2	2 798.4	511.6	18 665.6
2006-07	4 457.5	9 099.9	327.0	3 251.5	2 523.2	499.3	20 158.3
PIGS							
2004-05	1 614.6	847.3	1 285.4	894.8	647.0	45.6	5 342.5
2005-06	1 633.1	777.8	1 292.9	1 018.9	599.2	41.8	5 370.1
2006-07	1 601.4	788.0	1 269.7	1 047.3	568.1	42.7	5 321.9
CHICKENS							
2004-05	147 973.2	124 726.5	84 086.2	np	np	np	437 640.9
2005-06	149 432.5	122 320.1	82 723.2	np	np	np	437 864.5
2006-07	150 244.9	126 303.4	89 576.0	np	np	np	453 910.2

np not available for publication but included in totals where applicable, unless otherwise indicated

(a) For more information refer to paragraphs 4, 5 and 7 to 9 of the Explanatory Notes.

Quarter	New South Wales tonnes	Victoria tonnes	Queensland tonnes	South Australia tonnes	Western Australia tonnes	Tasmania tonnes	Australia tonnes
ORIGINAL							
2006							
December	114 184	102 841	273 353	24 906	29 466	15 528	560 541
2007							
March	120 231	102 959	253 459	26 256	29 559	15 740	548 468
June	112 983	85 567	274 034	21 145	27 565	15 964	537 517
September	107 427	83 312	280 138	17 671	28 998	13 077	530 877
December	113 527	95 382	255 334	22 767	32 413	13 912	533 589
2008							
March	111 849	94 439	211 758	22 536	30 846	14 773	486 457
SEASONALLY ADJUSTED							
2006							
December	114 422	97 974	285 378	22 629	27 288	15 778	561 145
2007							
March	116 282	96 499	289 099	22 877	28 736	14 394	562 460
June	111 665	87 713	258 864	22 160	29 346	14 984	528 169
September	112 447	91 998	253 331	22 142	30 303	15 222	527 244
December	113 765	90 592	266 640	20 753	30 201	14 110	533 528
2008							
March	112 541	90 835	240 667	19 516	30 004	13 602	511 909
TREND							
2006							
December	113 987	94 082	283 423	22 484	28 311	14 981	556 826
2007							
March	114 370	94 678	278 779	22 804	28 474	15 075	552 650
June	113 564	92 176	268 181	22 452	29 348	14 988	540 205
September	112 745	90 381	259 251	21 729	30 018	14 741	529 700
December	112 775	90 598	253 797	20 788	30 192	14 334	523 787
2008							
March	113 183	91 184	249 869	20 025	30 196	13 769	520 064

(a) For more information refer to paragraphs 4 to 7 of the Explanatory Notes.

RED MEAT PRODUCED(a), Veal: All Series

Quarter	New South Wales	Victoria	Queensland	South Australia	Western Australia	Tasmania	Australia
tonnes	tonnes	tonnes	tonnes	tonnes	tonnes	tonnes	tonnes
ORIGINAL							
2006							
December	3 814	2 171	511	33	50	147	6 738
2007							
March	4 039	1 012	657	42	49	35	5 846
June	3 697	2 858	672	41	72	89	7 441
September	3 393	5 938	579	41	76	718	10 757
December	3 047	2 092	453	30	67	152	5 853
2008							
March	2 454	1 146	488	35	65	49	4 250
SEASONALLY ADJUSTED							
2006							
December	3 951	3 243	574	40	52	211	8 066
2007							
March	4 042	3 239	675	43	59	247	7 987
June	3 514	3 001	602	37	71	267	7 521
September	3 454	2 885	565	38	64	253	7 471
December	3 144	3 103	512	36	70	223	6 961
2008							
March	2 461	3 566	500	35	79	343	5 976
TREND							
2006							
December	3 897	3 072	640	40	59	218	7 844
2007							
March	3 891	3 173	625	40	60	244	7 921
June	3 710	3 041	607	39	64	251	7 746
September	3 385	3 001	567	37	68	252	7 327
December	3 022	3 158	522	36	71	267	6 819
2008							
March	2 667	3 377	495	35	75	294	6 275

(a) For more information refer to paragraphs 4 to 7 of the Explanatory Notes.

RED MEAT PRODUCED(a), Mutton: All Series

Quarter	New South Wales	Victoria	Queensland	South Australia	Western Australia	Tasmania	Australia
	tonnes	tonnes	tonnes	tonnes	tonnes	tonnes	tonnes
ORIGINAL							
2006							
December	26 352	24 339	5 193	10 322	16 721	2 580	85 508
2007							
March	24 510	22 802	5 231	9 045	14 015	2 328	77 931
June	13 863	12 070	5 187	6 685	10 999	1 275	50 079
September	12 301	14 576	3 848	7 207	10 880	825	49 637
December	20 726	23 081	4 570	8 324	16 512	1 886	75 098
2008							
March	18 476	21 478	4 107	8 771	18 702	2 378	73 912
SEASONALLY ADJUSTED							
2006							
December	22 843	20 448	4 919	8 524	14 357	2 251	73 524
2007							
March	22 361	19 935	5 145	8 102	12 027	1 717	68 513
June	14 179	14 139	5 106	8 445	13 352	1 396	57 157
September	16 010	17 991	4 234	8 161	12 845	1 426	60 352
December	17 897	19 355	4 323	6 898	14 191	1 634	64 617
2008							
March	16 829	18 713	4 029	7 833	16 055	1 749	64 705
TREND							
2006							
December	22 630	19 769	4 930	8 205	13 681	1 941	70 974
2007							
March	20 126	18 385	5 062	8 511	13 083	1 786	66 709
June	17 174	17 076	4 896	8 246	12 730	1 523	61 641
September	16 138	17 283	4 538	7 878	13 305	1 464	60 656
December	16 587	18 411	4 224	7 574	14 374	1 586	62 724
2008							
March	17 615	19 617	4 007	7 393	15 428	1 720	65 469

(a) For more information refer to paragraphs 4 to 7 of the Explanatory Notes.

<i>Quarter</i>	<i>New South Wales</i>	<i>Victoria</i>	<i>Queensland</i>	<i>South Australia</i>	<i>Western Australia</i>	<i>Tasmania</i>	<i>Australia</i>
tonnes	tonnes	tonnes	tonnes	tonnes	tonnes	tonnes	tonnes
ORIGINAL							
2006							
December	22 800	49 030	1 437	17 891	10 733	2 385	104 276
2007							
March	21 816	49 433	1 680	19 843	14 062	2 205	109 039
June	21 864	43 981	1 710	18 228	14 497	2 928	103 208
September	24 900	46 042	2 021	19 059	11 564	2 625	106 211
December	25 057	53 059	2 601	24 257	12 753	2 848	120 576
2008							
March	22 041	46 732	2 060	20 384	12 222	2 306	105 745
SEASONALLY ADJUSTED							
2006							
December	22 134	46 032	1 452	17 339	10 649	2 559	102 041
2007							
March	21 850	49 581	1 858	18 322	14 418	2 448	108 471
June	21 513	44 702	1 542	17 489	13 233	2 648	99 802
September	25 927	48 251	2 049	22 511	12 518	2 470	112 853
December	24 343	49 829	2 597	23 519	12 739	3 050	118 151
2008							
March	22 249	48 202	2 270	18 850	12 496	2 576	105 392
TREND							
2006							
December	22 283	46 576	1 478	17 835	12 245	2 541	103 465
2007							
March	21 990	47 172	1 601	17 824	12 840	2 511	103 935
June	22 946	47 361	1 816	19 383	13 293	2 562	106 902
September	24 039	47 826	2 065	21 193	12 986	2 675	110 520
December	24 156	48 590	2 311	21 768	12 553	2 749	112 284
2008							
March	23 524	49 337	2 501	21 273	12 517	2 752	111 896

(a) For more information refer to paragraphs 4 to 7 of the Explanatory Notes.

RED MEAT PRODUCED(a), Pig meat: All Series

<i>Quarter</i>	<i>New South Wales</i>	<i>Victoria</i>	<i>Queensland</i>	<i>South Australia</i>	<i>Western Australia</i>	<i>Tasmania</i>	<i>Australia</i>
tonnes	tonnes	tonnes	tonnes	tonnes	tonnes	tonnes	tonnes
ORIGINAL							
2006							
December	26 827	14 246	22 144	19 277	9 558	635	92 769
2007							
March	26 147	13 285	23 279	19 652	9 988	541	92 959
June	28 897	15 481	24 818	19 610	10 239	690	99 754
September	28 902	13 387	24 903	20 900	9 570	609	98 271
December	28 614	12 909	22 329	21 448	9 181	597	95 079
2008							
March	26 604	11 238	22 725	20 662	9 213	557	90 999
SEASONALLY ADJUSTED							
2006							
December	27 288	14 485	23 040	19 943	10 091	596	94 979
2007							
March	27 817	14 039	24 115	20 110	10 042	586	97 247
June	27 390	14 580	23 746	18 631	9 697	697	94 934
September	28 306	13 278	24 213	20 862	9 569	595	96 733
December	29 048	13 100	23 271	22 089	9 665	562	97 208
2008							
March	28 334	11 922	23 476	21 224	9 265	602	95 260
TREND							
2006							
December	27 383	14 620	23 381	19 781	9 785	600	95 514
2007							
March	27 454	14 364	23 735	19 551	9 894	625	95 775
June	27 833	14 068	23 961	19 801	9 843	632	96 264
September	28 250	13 579	23 852	20 540	9 636	615	96 413
December	28 581	12 868	23 595	21 358	9 508	590	96 369
2008							
March	28 775	12 124	23 418	21 952	9 385	574	96 245

(a) For more information refer to paragraphs 4 to 7 of the Explanatory Notes.

TOTAL RED MEAT PRODUCED(a): All Series

Quarter	New South Wales	Victoria	Queensland	South Australia	Western Australia	Tasmania	Australia
	tonnes	tonnes	tonnes	tonnes	tonnes	tonnes	tonnes
ORIGINAL							
2006							
December	193 977	192 627	302 638	72 430	66 529	21 275	849 833
2007							
March	196 744	189 491	284 305	74 838	67 673	20 850	834 242
June	181 305	159 956	306 421	65 709	63 372	20 946	797 998
September	176 923	163 255	311 488	64 877	61 088	17 854	795 753
December	190 970	186 523	285 288	76 825	70 926	19 394	830 195
2008							
March	181 424	175 032	241 138	72 387	71 049	20 063	761 362
SEASONALLY ADJUSTED							
2006							
December	190 638	182 182	315 363	68 475	62 437	21 395	839 755
2007							
March	192 352	183 293	320 892	69 454	65 282	19 392	844 678
June	178 261	164 135	289 860	66 762	65 699	19 992	787 583
September	186 144	174 403	284 392	73 714	65 299	19 966	804 653
December	188 197	175 979	297 343	73 295	66 866	19 579	820 465
2008							
March	182 414	173 238	270 942	67 458	67 899	18 872	783 242
TREND							
2006							
December	190 180	178 119	313 852	68 345	64 081	20 281	834 623
2007							
March	187 831	177 772	309 802	68 730	64 351	20 241	826 990
June	185 227	173 722	299 461	69 921	65 278	19 956	812 758
September	184 557	172 070	290 273	71 377	66 013	19 747	804 616
December	185 121	173 625	284 449	71 524	66 698	19 526	801 983
2008							
March	185 764	175 639	280 290	70 678	67 601	19 109	799 949

(a) For more information refer to paragraphs 4 to 7 of the Explanatory Notes.

Quarter	New South Wales	Victoria	Queensland	South Australia	Western Australia	Australia
	tonnes	tonnes	tonnes	tonnes	tonnes	tonnes

ORIGINAL

2006						
December	73 668	58 997	35 030	np	np	206 225
2007						
March	75 905	56 976	36 036	np	np	204 254
June	73 524	59 120	34 970	np	np	202 754
September	68 748	57 002	37 640	np	np	199 865
December	69 506	61 849	39 238	np	np	207 705
2008						
March	67 432	54 459	38 201	np	np	196 474

SEASONALLY ADJUSTED

2006						
December	73 845	57 060	33 707	np	np	202 837
2007						
March	75 721	58 368	36 519	np	np	206 037
June	72 249	58 849	36 715	np	np	203 027
September	70 051	57 679	36 823	np	np	201 182
December	69 800	59 913	37 863	np	np	204 353
2008						
March	66 960	55 965	38 566	np	np	197 975

TREND

2006						
December	73 351	58 993	33 941	np	np	201 327
2007						
March	73 972	58 341	35 835	np	np	203 410
June	73 024	58 309	36 697	np	np	203 720
September	70 770	58 649	37 214	np	np	202 887
December	68 941	58 146	37 748	np	np	201 452
2008						
March	67 601	57 330	38 413	np	np	200 127

np not available for publication but included in totals where applicable, unless otherwise indicated

(a) For more information refer to paragraphs 8 and 9 of the Explanatory Notes.

MEAT PRODUCED(a): Original

<i>Financial year</i>	<i>New South Wales</i> tonnes	<i>Victoria</i> tonnes	<i>Queensland</i> tonnes	<i>South Australia</i> tonnes	<i>Western Australia</i> tonnes	<i>Tasmania</i> tonnes	<i>Australia</i> tonnes
BEEF							
2004-05	440 720	363 226	1 046 410	93 049	131 407	56 859	2 132 810
2005-06	411 202	331 311	1 054 198	83 547	113 318	54 807	2 049 521
2006-07	453 065	370 471	1 106 975	90 136	114 434	59 580	2 195 713
VEAL							
2004-05	12 941	11 393	3 451	176	250	886	29 147
2005-06	13 288	10 011	2 994	149	250	809	27 551
2006-07	15 110	11 655	2 543	157	249	815	30 579
MUTTON							
2004-05	77 517	68 026	18 899	22 721	43 842	6 351	237 356
2005-06	78 795	70 562	19 102	24 098	45 939	5 294	243 791
2006-07	82 552	74 875	19 854	32 962	53 553	7 192	270 988
LAMB							
2004-05	82 550	135 948	5 564	72 157	49 122	8 950	354 290
2005-06	84 763	153 449	5 457	69 636	58 080	10 452	381 837
2006-07	88 855	184 913	6 048	71 871	50 610	10 286	412 583
PIG MEAT							
2004-05	119 085	62 740	96 365	63 525	43 999	2 538	388 598
2005-06	115 908	57 015	95 628	76 663	40 977	2 374	388 863
2006-07	109 637	58 316	94 276	78 008	38 901	2 487	381 865
TOTAL RED MEAT							
2004-05	732 812	641 332	1 170 689	251 627	268 620	75 584	3 142 201
2005-06	703 956	622 349	1 177 380	254 093	258 563	73 735	3 091 562
2006-07	749 219	700 230	1 229 696	273 136	257 746	80 360	3 291 728
CHICKEN MEAT							
2004-05	265 716	219 508	128 669	np	np	np	750 029
2005-06	285 294	215 448	135 650	np	np	np	772 613
2006-07	291 907	236 020	139 601	np	np	np	811 591

np not available for publication but included in totals where applicable, unless otherwise indicated

(a) For more information refer to paragraphs 4 to 9 in the Explanatory Notes.

Period	FRESH, CHILLED OR FROZEN MEAT									PROCESSED MEAT	
	<i>Beef bone-in</i>	<i>Beef bone-out</i>	<i>Veal bone-in</i>	<i>Veal bone-out</i>	<i>Mutton bone-in</i>	<i>Mutton bone-out</i>	<i>Lamb bone-in</i>	<i>Lamb bone-out</i>	<i>Pork</i>	<i>Bacon and ham</i>	<i>Canned meat</i>
	tonnes	tonnes	tonnes	tonnes	tonnes	tonnes	tonnes	tonnes	tonnes	tonnes	tonnes
2004-05	44 636	959 391	3 320	5 775	101 740	41 790	106 518	21 699	43 495	449	22 835
2005-06	52 196	890 604	3 266	5 793	106 948	41 458	119 523	26 491	44 007	292	20 857
2006-07	52 389	971 531	3 753	5 792	124 851	42 826	127 491	29 042	41 313	550	16 051
2006											
December	15 027	267 379	943	1 971	43 691	13 141	35 094	7 098	10 410	145	4 989
2007											
March	11 598	218 939	883	517	35 039	11 717	30 773	7 527	9 656	134	3 130
June	11 636	238 056	989	1 363	22 112	8 503	30 767	8 045	10 272	145	2 621
September	12 745	230 120	1 037	1 956	19 988	7 859	31 534	8 043	10 912	98	2 766
December	15 341	248 640	965	1 533	37 222	12 511	40 517	8 697	9 710	209	2 895
2008											
March	11 310	184 613	771	571	34 329	11 500	31 772	7 511	8 998	226	3 422

(a) For more information refer to paragraphs 10 and 11 of the Explanatory Notes.

EXPORTS OF LIVE SHEEP AND CATTLE, Australia(a): Original

<i>Period</i>	<i>Number</i>	<i>Gross weight</i>	<i>Gross value</i>	<i>Unit value</i>
	'000	'000 tonnes	\$'000	\$
.....				
SHEEP				
2004-05	3 233.2	166.1	206 678	63.92
2005-06	4 247.7	209.5	291 452	68.61
2006-07	4 137.9	198.8	288 697	69.77
2006				
December	1 388.7	63.0	97 768	70.40
2007				
March	1 021.5	50.2	69 493	68.03
June	561.4	28.7	37 815	67.36
September	910.1	43.5	63 022	69.25
December	1 279.1	62.3	91 101	71.22
2008				
March	1 116.5	48.2	67 334	60.31
.....				
CATTLE				
2004-05	573.7	191.7	374 060	652.01
2005-06	548.8	182.7	357 793	651.99
2006-07	638.0	216.1	437 427	685.58
2006				
December	133.6	45.3	92 966	695.98
2007				
March	122.4	40.9	88 267	721.36
June	194.9	69.1	129 024	662.01
September	216.0	74.2	137 654	637.25
December	135.6	45.9	88 758	654.55
2008				
March	183.0	58.5	113 980	622.79

(a) For more information refer to paragraph 12 of the Explanatory Notes.

WHOLE MILK INTAKE, By Factories(a)(b): All Series

Quarter	New South Wales	Victoria	Queensland	South Australia	Western Australia	Tasmania	Australia
	ML	ML	ML	ML	ML	ML	ML
ORIGINAL							
2006							
September	292	1 698	150	157	93	117	2 508
December	311	2 192	147	194	98	255	3 197
2007							
March	255	1 363	124	159	77	167	2 144
June	247	1 045	113	145	81	103	1 734
September	275	1 555	125	145	86	119	2 304
December	294	2 046	134	180	89	251	2 993
SEASONALLY ADJUSTED							
2006							
September	286	1 700	141	168	90	170	2 555
December	275	1 569	136	164	88	162	2 394
2007							
March	270	1 479	131	163	86	154	2 283
June	273	1 530	124	159	85	157	2 328
September	269	1 546	118	155	82	172	2 342
December	261	1 472	124	152	79	160	2 248
TREND							
2006							
September	285	1 668	141	169	89	168	2 520
December	277	1 583	136	165	88	162	2 411
2007							
March	272	1 523	130	162	87	158	2 332
June	270	1 513	125	159	84	160	2 311
September	267	1 515	121	156	82	163	2 304
December	264	1 507	120	152	80	165	2 288

(a) For more information refer to paragraph 13 of the Explanatory Notes.

(b) Data for Australian Capital Territory are included in New South Wales; data for Northern Territory are included in South Australia.

Source: Original series data from Dairy Australia.

MARKET MILK SALES, By Factories(a)(b): All Series

	<i>New South Wales</i>	<i>Victoria</i>	<i>Queensland</i>	<i>South Australia</i>	<i>Western Australia</i>	<i>Tasmania</i>	<i>Australia</i>
<i>Quarter</i>	ML	ML	ML	ML	ML	ML	ML
ORIGINAL							
2006							
September	173	129	120	53	58	14	547
December	168	125	119	51	55	13	531
2007							
March	167	126	118	51	57	14	532
June	175	129	121	53	59	14	550
September	174	129	128	53	59	14	557
December	168	127	125	52	59	14	545
SEASONALLY ADJUSTED							
2006							
September	170	127	117	51	57	14	535
December	170	126	119	51	55	13	534
2007							
March	170	128	119	51	58	14	540
June	173	128	122	53	59	14	550
September	171	127	124	52	58	14	545
December	170	128	125	53	59	14	548
TREND							
2006							
September	169	126	116	51	56	14	532
December	170	127	118	51	57	14	537
2007							
March	171	127	120	52	57	14	542
June	172	128	122	52	58	14	545
September	171	128	124	52	59	14	548
December	171	128	125	52	59	14	548

(a) For more information refer to paragraph 13 of the Explanatory Notes.

(b) Data for Australian Capital Territory are included in New South Wales; data for Northern Territory are included in South Australia.

Source: Original series data from Dairy Australia.

BROKERS AND DEALERS RECEIVALS OF TAXABLE WOOL(a): All Series

Quarter	New South Wales	Victoria	Queensland	South Australia	Western Australia	Tasmania	Australia	% of total received by brokers
	tonnes	tonnes	tonnes	tonnes	tonnes	tonnes	tonnes	%
ORIGINAL								
2006								
December	34 594	38 145	2 926	20 110	29 061	3 608	128 444	80.0
2007								
March	26 634	30 828	2 786	18 777	29 578	1 958	110 561	80.8
June	28 002	23 457	4 575	15 490	18 158	2 407	92 089	77.2
September	37 528	25 965	3 744	17 841	20 646	2 896	108 620	83.6
December	35 433	33 708	2 977	19 328	25 562	2 165	119 173	79.2
2008								
March	29 911	24 815	2 193	14 869	24 636	1 691	98 116	81.4
SEASONALLY ADJUSTED								
2006								
December	31 453	30 203	3 562	17 150	26 334	2 809	111 510	..
2007								
March	30 421	31 485	3 903	20 091	25 030	2 648	113 578	..
June	32 432	29 554	4 177	19 190	25 126	2 671	113 150	..
September	32 256	26 808	2 722	16 442	20 930	2 592	101 751	..
December	32 278	26 769	3 635	16 515	23 050	1 797	104 045	..
2008								
March	34 169	25 208	3 080	16 055	20 709	2 350	101 572	..
TREND								
2006								
December	30 868	30 517	3 903	17 907	26 436	2 870	112 501	..
2007								
March	30 979	30 551	3 828	19 009	25 273	2 761	112 403	..
June	31 729	29 429	3 669	18 730	23 914	2 586	110 058	..
September	32 276	27 706	3 436	17 442	22 742	2 388	105 991	..
December	32 912	26 279	3 231	16 349	21 797	2 201	102 769	..
2008								
March	33 413	25 482	3 139	15 996	21 150	2 113	101 294	..

.. not applicable

(a) For more information refer to paragraphs 4, 14 and 15 of the Explanatory Notes.

<i>Financial year</i>	<i>New South Wales</i>	<i>Victoria</i>	<i>Queensland</i>	<i>South Australia</i>	<i>Western Australia</i>	<i>Tasmania</i>	<i>Australia</i>
-----------------------	------------------------	-----------------	-------------------	------------------------	--------------------------	-----------------	-------------------------

.....

WHOLE MILK INTAKE BY FACTORIES (b) (ML)

2004-05	1 218	6 613	619	679	396	600	10 125
2005-06	1 217	6 583	609	680	377	622	10 089
2006-07	1 105	6 297	534	655	349	642	9 582

.....

MARKET MILK SALES BY FACTORIES (b) (ML)

2004-05	641	480	429	199	215	53	2 017
2005-06	656	495	445	198	219	53	2 066
2006-07	683	509	477	207	229	55	2 160

.....

BROKERS AND DEALERS RECEIVALS OF TAXABLE WOOL (Tonnes)

2004-05	140 840	120 360	19 045	67 516	107 054	10 881	465 696
2005-06	141 422	119 382	18 558	62 004	118 801	12 360	472 527
2006-07	124 884	121 439	15 927	72 269	104 492	11 518	450 529

.....

(a) For more information refer to paragraphs 13 to 15 of the Explanatory Notes.

(b) Data for Australian Capital Territory are included in New South Wales; data for Northern Territory are included in South Australia.

Source: Original series milk data from Dairy Australia.

EXPLANATORY NOTES

INTRODUCTION

1 This publication contains information on livestock slaughterings, meat production, exports of live sheep and live cattle, exports of fresh, chilled, frozen and processed meat, and whole milk intake by factories, market milk sales by factories and receivals of taxable wool by wool brokers and dealers.

2 The figures shown in this publication have been revised where necessary and as a consequence may not agree with similar data shown in previous publications.

3 Where figures have been rounded, discrepancies may occur between sums of the component items and totals.

4 Unless indicated otherwise, Australian totals include data for all states and both territories. Where states and territories do not appear in tables, this is for reasons of confidentiality.

LIVESTOCK SLAUGHTERINGS AND MEAT PRODUCTION

5 The statistics on slaughterings for red meat production are based on a monthly collection from abattoirs and other major slaughtering establishments and include estimates of animals slaughtered on farms and by country butchers and other small slaughtering establishments.

6 Red meat is shown in carcass weight and excludes offal.

7 Care should be taken when using this information as the figures only relate to slaughterings for human consumption and do not include animals condemned, slaughtered for pet food or those killed for boiling down.

8 Poultry slaughterings and meat produced statistics have been compiled from quarterly returns supplied by commercial poultry slaughtering establishments and comprise boilers, fryers and roasters. Many small producers are excluded from the collection; however, the statistics represent a high level of coverage. Tasmanian, Northern Territory and Australian Capital Territory data are excluded from the Australian total.

9 Chicken meat is shown in dressed weight of whole birds, pieces and giblets. Some slaughterings and meat production statistics for 'Ducks and Drakes' and 'Other Fowls and Turkeys' are available by contacting the ABS on Hobart (03) 6222 5855 or by writing to GPO Box 66, Hobart Tasmania 7001 (Attention: Agriculture Section).

EXPORTS OF FRESH, CHILLED, FROZEN AND PROCESSED MEAT

10 Table 20 shows exports of fresh, chilled, frozen and processed meat. International trade statistics are compiled by the ABS from information submitted by exporters and importers or their agents to the Australian Customs Service. Factors can be applied to beef, veal, mutton and lamb bone-out figures to derive bone-in carcass weight which, when added to bone-in figures, shows total exports in carcass weight. The factor for beef and veal is 1.5 and for mutton and lamb, 2.0. This information is sourced from Department of Agriculture, Fisheries and Forestry – Australia.

11 Beef also includes buffalo meat. Bacon and ham shown is the cured carcass weight of smoked or cooked bacon and ham. It also includes the stated net weight of packs of canned bacon and ham. Canned meat is shown as the canned weight and excludes canned bacon and ham.

LIVE SHEEP AND CATTLE EXPORTS

12 Table 21 contains statistics of the number of live sheep and cattle exported, the gross weight, gross value and unit value. The unit value is obtained by dividing the gross value by the number of animals exported. Sheep and cattle exported for breeding are excluded.

MILK

13 Tables 2, 22, 23 and 25 contain statistics collected by Dairy Australia. Whole milk intake by factories includes the whole milk equivalent of farm cream intake. Market milk sales includes white, flavoured, high and low fat milk and UHT milk. Interstate transfers of UHT milk have been included in their state of destination.

EXPLANATORY NOTES *continued*

WOOL RECEIVALS

14 The statistics in tables 2, 24 and 25 show the amount of taxable wool received by brokers and purchased by dealers from wool producers. It excludes wool received by brokers on which tax has already been paid by other dealers (private buyers) or brokers.

15 The information shown is on the basis of the state in which wool has actually been received and does not necessarily reflect the production of wool in that state.

SEASONAL ADJUSTMENT

16 Seasonal adjustment is a means of removing the estimated effects of normal seasonal variation from the series so that the effects of other influences can be more clearly recognised.

17 In the seasonal adjustment of the livestock estimates, account has been taken of both normal seasonal factors and 'trading day' effects, where significant, (arising from the varying length of each quarter and the varying numbers of Sundays, Mondays, Tuesdays etc. in the quarter). Adjustments are also made for the effects of change in the date of Easter holidays, again, where significant. Seasonal adjustment does not remove from the series the effect of irregular influences (e.g. abnormal weather, industrial disputes).

18 The state component series have been seasonally adjusted independently. Therefore, the adjusted components may not add to the Australian group totals.

19 In this publication, the seasonally adjusted estimates are produced by the concurrent seasonal adjustment method which takes account of the latest available original estimates. This method improves the estimation of seasonal factors and therefore, the seasonally adjusted and trend estimates for the current and previous quarters. As a result of this improvement, revisions to the seasonally adjusted and trend estimates will be observed for recent periods. In most instances the only noticeable revisions will be to the previous quarter and the same quarter one year ago. A more detailed review is conducted annually prior to the September quarter release, using data up to and including the June quarter. The concurrent seasonal adjustment methodology replaces the forward factor methodology used previously.

20 More recently, the ABS has implemented improved methods of producing seasonally adjusted estimates, focused on the application of Autoregressive Integrated Moving Average (ARIMA) modelling techniques. ARIMA modelling is a technique that can be used to extend original estimates beyond the end of a time series. For more information on the details of ARIMA modelling, see the feature article '*Use of ARIMA modelling to reduce revisions*' in the October 2004 issue of *Australian Economic Indicators* (cat. no. 1350.0).

TREND ESTIMATES

21 A trend estimate is obtained by reducing the irregular component from the seasonally adjusted series. In this publication trend estimates are generally derived by applying a 7-term Henderson moving average to the seasonally adjusted series. The 7-term Henderson (like all Henderson averages) is symmetric, but as the end of a time series is approached, asymmetric forms of the average are applied. Unlike the weights of the standard 7-term Henderson moving average, the weights employed here have been tailored to suit the particular characteristics of individual series. While the asymmetric weights enable the trend to be calculated for recent quarters, it does result in revisions to the estimates for the most recent three quarters as additional observations become available. Revisions of trend estimates will also occur with revisions to the original data and re-estimation of seasonal factors.

22 Sensitivity analysis indicates the potential magnitude and direction of revisions created to the last three estimates. It aims to show how a specified movement in the seasonally adjusted data in the next period will affect the trend path of the time series. By showing how sensitive the trend estimates are to the addition of new data, the

EXPLANATORY NOTES *continued*

TREND ESTIMATES *continued*

analysis provides information which can be used in the assessment of the trend's stability.

23 The state component series have been adjusted independently. Therefore, the adjusted components may not add to the Australian group totals.

24 For further information, see *Information Paper: A Guide to Interpreting Time Series – Monitoring 'Trends', an Overview* (cat. no. 1348.0) or contact the Assistant Director, Time Series Analysis on Canberra (02) 6252 6345.

RELATED PUBLICATIONS

25 Current publications and other products released by the ABS are listed in the *Catalogue of Publications and Products* (cat. no. 1101.0). The Catalogue is available from any ABS office or the ABS web site <<http://www.abs.gov.au>>. The ABS also issues a daily Release Advice on the web site which details products to be released in the week ahead.

GENERAL ACKNOWLEDGMENT

26 ABS publications draw extensively on information provided freely by individuals, businesses, governments and other organisations. Their continued cooperation is very much appreciated. Without it, the wide range of statistics published by the ABS would not be available. Information received by the ABS is treated in strict confidence as required by the *Census and Statistics Act 1905*.

APPENDIX WHAT IF ... ? REVISIONS TO TREND ESTIMATES

TREND REVISIONS

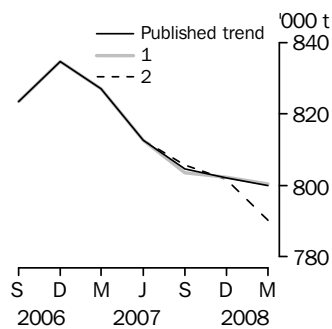
Recent seasonally adjusted and trend estimates are likely to be revised when original estimates for subsequent quarters become available. The approximate effects of possible scenarios on trend estimates are presented in the 'What-if' graphs below. These illustrate the impact on trend estimates if next quarter's seasonally adjusted estimate either rises (1) or falls (2) by a certain percentage, based on the historical average of movements in seasonally adjusted estimates.

For further information, see paragraphs 21 to 23 of the Explanatory Notes.

Red meat production

1. The next quarter's seasonally adjusted estimate of red meat production is 2.3% higher than the March quarter 2008 estimate.
2. The next quarter's seasonally adjusted estimate of red meat production is 2.3% lower than the March quarter 2008 estimate.

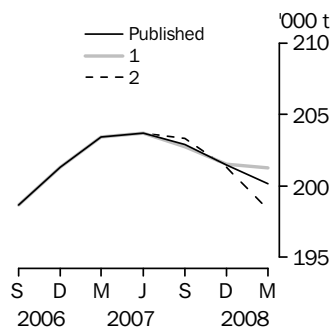
WHAT-IF RED MEAT PRODUCTION



Chicken meat production

1. The next quarter's seasonally adjusted estimate of chicken meat production is 2.6% higher than the March quarter 2008 estimate.
2. The next quarter's seasonally adjusted estimate of chicken meat production is 2.6% lower than the March quarter 2008 estimate.

WHAT-IF CHICKEN MEAT PRODUCTION

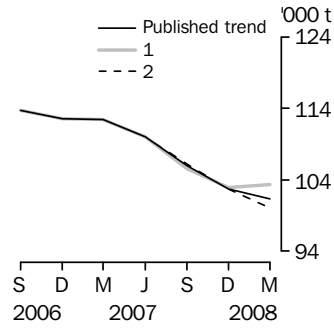


APPENDIX WHAT IF ... ? REVISIONS TO TREND ESTIMATES *continued*

Wool receivals

1. The next quarter's seasonally adjusted estimate of wool receivals is 5.7% higher than the March quarter 2008 estimate.
2. The next quarter's seasonally adjusted estimate of wool receivals is 5.7% lower than the March quarter 2008 estimate.

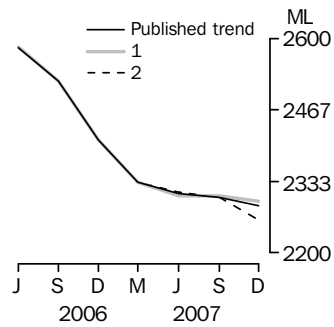
WHAT-IF WOOL RECEIVALS



Whole milk intake by factories

1. The next quarter's seasonally adjusted estimate of whole milk intake by factories is 2.8% higher than the December quarter 2007 estimate.
2. The next quarter's seasonally adjusted estimate of whole milk intake by factories is 2.8% lower than the December quarter 2007 estimate.

WHAT-IF WHOLE MILK INTAKE BY FACTORIES



FOR MORE INFORMATION . . .

INTERNET **www.abs.gov.au** the ABS website is the best place for data from our publications and information about the ABS.

INFORMATION AND REFERRAL SERVICE

Our consultants can help you access the full range of information published by the ABS that is available free of charge from our website. Information tailored to your needs can also be requested as a 'user pays' service. Specialists are on hand to help you with analytical or methodological advice.

PHONE 1300 135 070

EMAIL client.services@abs.gov.au

FAX 1300 135 211

POST Client Services, ABS, GPO Box 796, Sydney NSW 2001

FREE ACCESS TO STATISTICS

All statistics on the ABS website can be downloaded free of charge.

WEB ADDRESS www.abs.gov.au